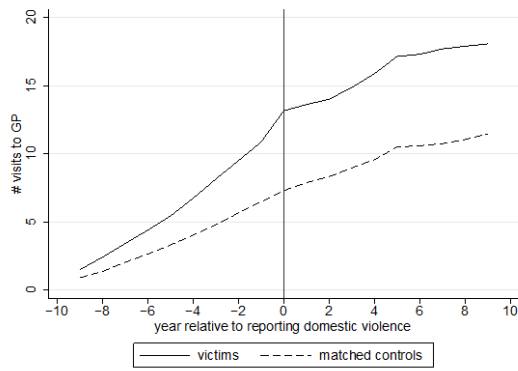


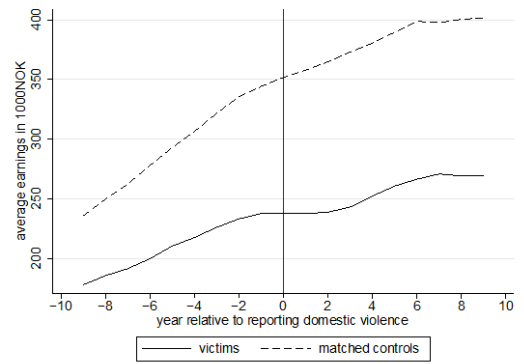
Online Appendix

Domestic Violence Reports and the Mental Health and Well-being of Victims and Their Children

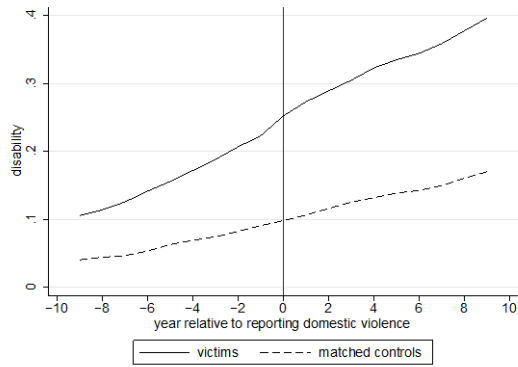
by Manudeep Bhuller, Gordon B. Dahl, Katrine V. Løken and Magne Mogstad



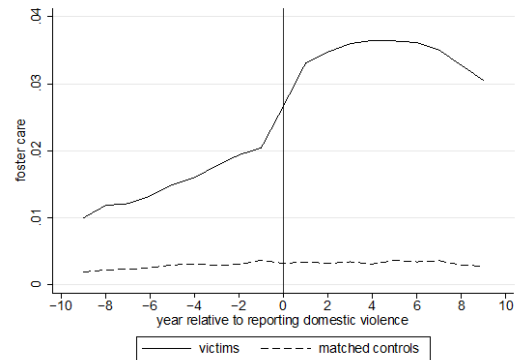
Panel A: Victim number of doctor visits



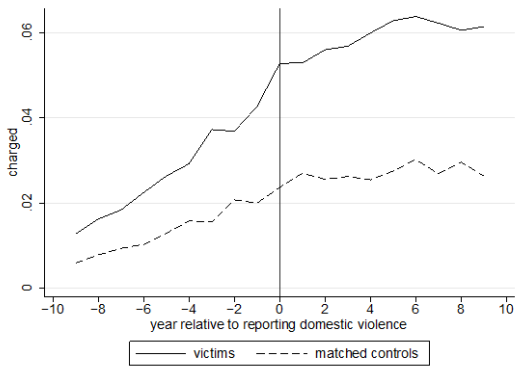
Panel B: Victim annual earnings



Panel C: Victim disability insurance



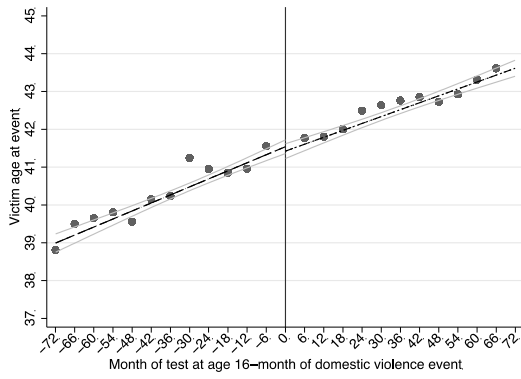
Panel D: Child placement in foster care



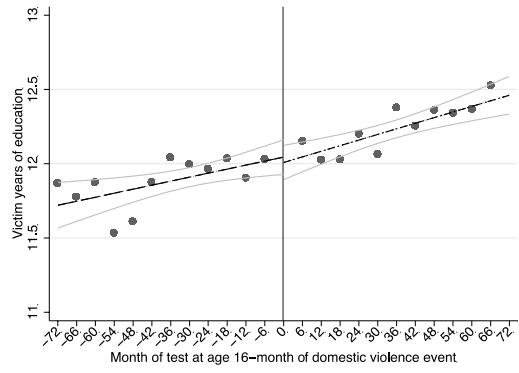
Panel E: Child charged with a crime

Figure A1. Time patterns for additional victim and child outcomes compared to matched controls who are never victimized

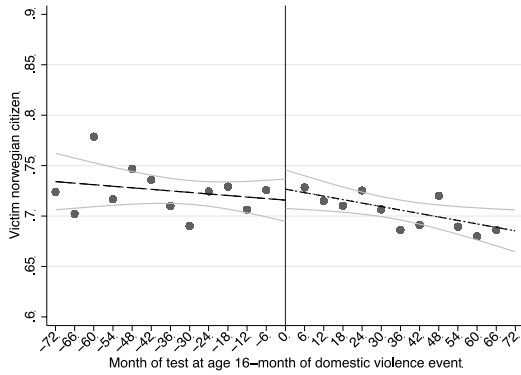
Notes: Solid lines are for victims and dashed lines are for a matched set of controls which are never victims. See text for definitions of the outcomes.



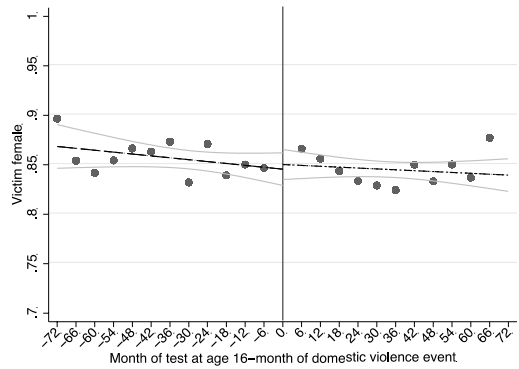
Panel A: Victim age



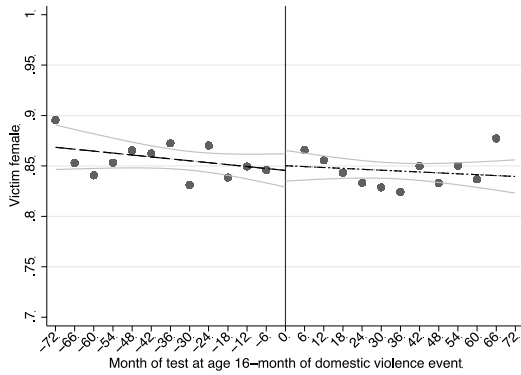
Panel B: Victim years of education



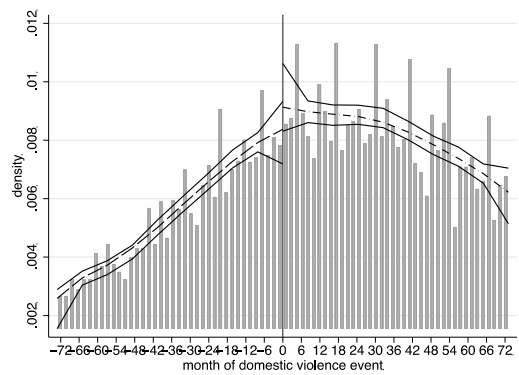
Panel C: Victim citizenship



Panel D: Victim gender



Panel E: Child gender



Panel F: McCrary density test

Figure A2. Tests for manipulation in the RD design

Notes: Panels A-E are RD plots of pre-determined victim and child characteristics, with dots representing averages for 6 month bins. The estimated lines are based on the underlying, daily data. Gray lines denote pointwise 90% confidence intervals. For panel F this is the plot corresponding to a McCrary density test.

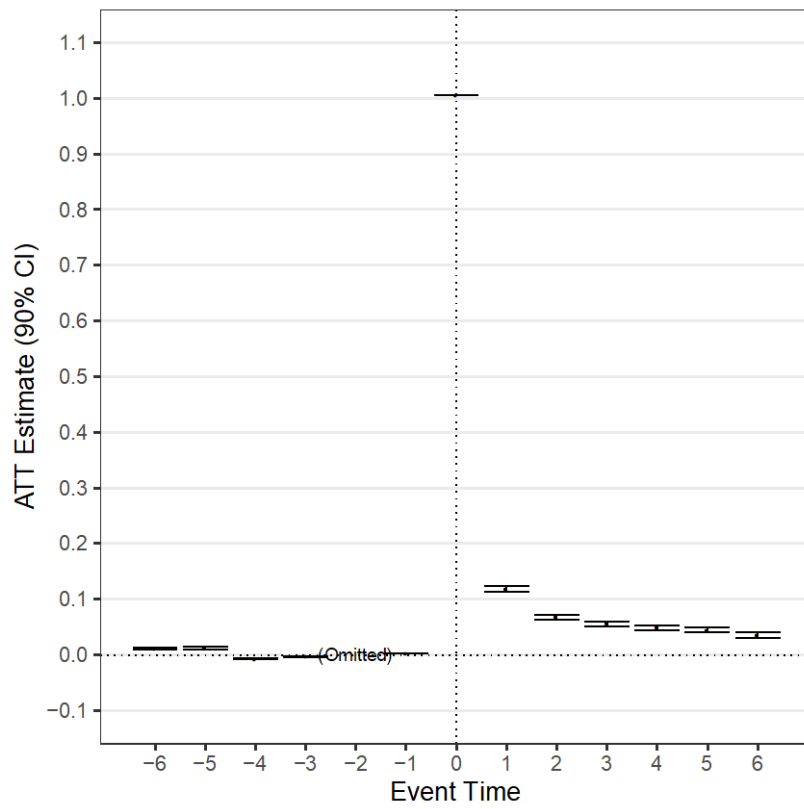
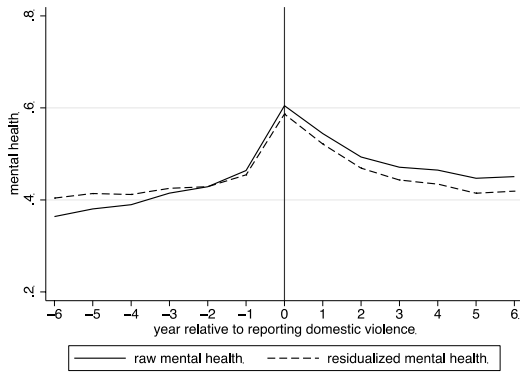
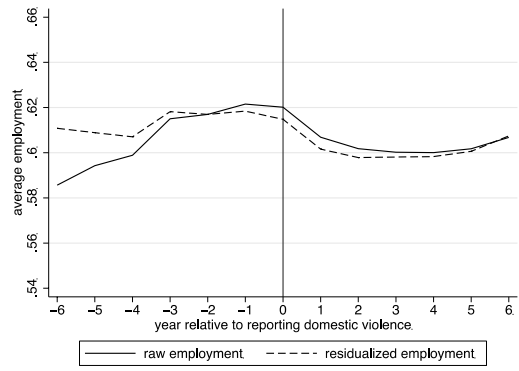


Figure A3. Domestic violence report

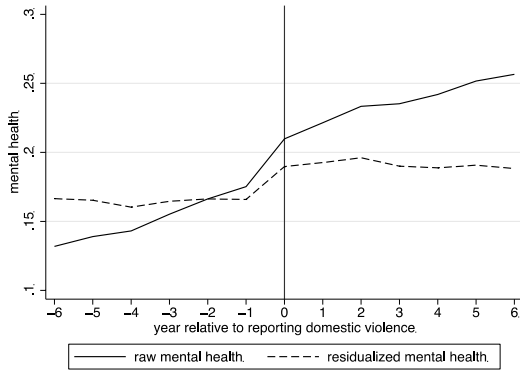
Note: The figures show DiD estimates for a report of DV.



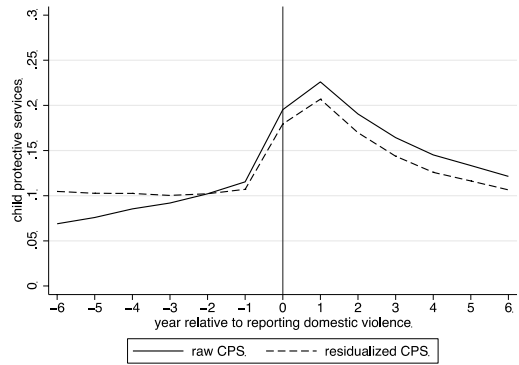
Panel A: Victim mental health



Panel B: Victim employment



Panel C: Child mental health



Panel D: Child protective services

Figure A4. Time patterns for victim and child outcomes compared to residualized outcomes

Notes: Solid lines show raw data and dashed lines show residualized outcomes after controlling for age, gender, immigrant status and year. See text for definitions of the outcomes.